

# AB 617 Update: San Joaquin Valley *Shafter and Fresno*

*Cesar Aguirre, Central California Environmental Justice Network  
and  
Kevin D. Hamilton, RRT, Central California Asthma Collaborative*

# Valley Steering Committee(s) Have Vision

- The **South Central Fresno** and **Shafter** Steering Committee(s) quickly saw the opportunities and possible threats from pollution sources outside but adjacent to, the initial boundaries, and the existing source inventory accuracy against ground truthing.
- The SCF SC has come to a consensus believes AB 617's geographic boundaries to include the top 1% of CalEnviroScreen AND to capture Marks to the west and American to the south.
- The **Shafter Area** SC came to consensus early on to expand emissions inventory to 7 mile diameter .
- Both **Shafter** and **Fresno** Steering Committee's have demanded the inclusion of Pesticide monitoring. Additionally, Shafter is adjacent to a number of large dairy operations and demands Dairy emission monitoring as well.

# Community Steering Committee Update

- There have been 4 Steering Committee(SC) meetings to date.
  - Air District, SC introductions, overview of process, work toward clean air to date, AB 617 SC process and planning and proposed meeting schedule. Initial governance model was proposed.
  - Charter discussion and adoption was accomplished in meeting two .
  - Meetings three and four were primarily boundary discussion and source review. Community recommends expansion to include top 1% CES census tracts in **Fresno** and a seven mile diameter circle centered in downtown **Shafter**. The Steering Committee by majority vote, adopted the expanded boundary (see maps) in both communities.

# Community Steering Committee Update (cont.)

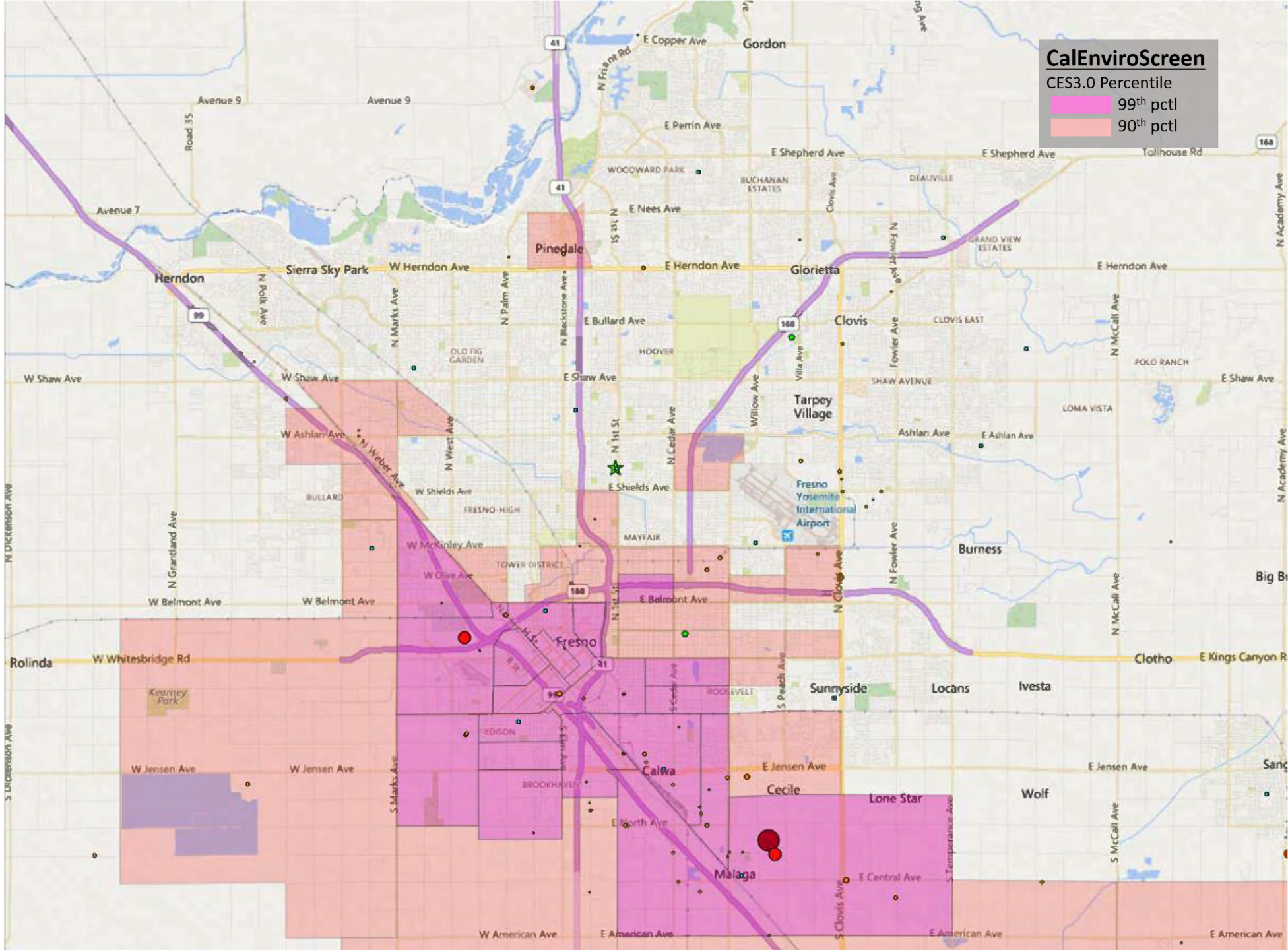
- Early on EJgroups from both Shafter and Fresno reached out to the district to meet and plan the initial meeting. A commitment was made by both to continue this process.
  - In a subsequent SC meeting residents expressed concern that these meetings were taking place without resident input. As a result, residents and all committee members were invited to future interim meetings.
- There have been numerous conflicts between the District, residents and EJrepresentatives. Governance, interpretation and translation problem.
- Residents have expressed concern regarding the apparent lack of cultural competency and sensitivity by the facilitator and some air district staff.
  - We suggest the District and facilitator participate in an EJled training to address this.

South Central Fresno

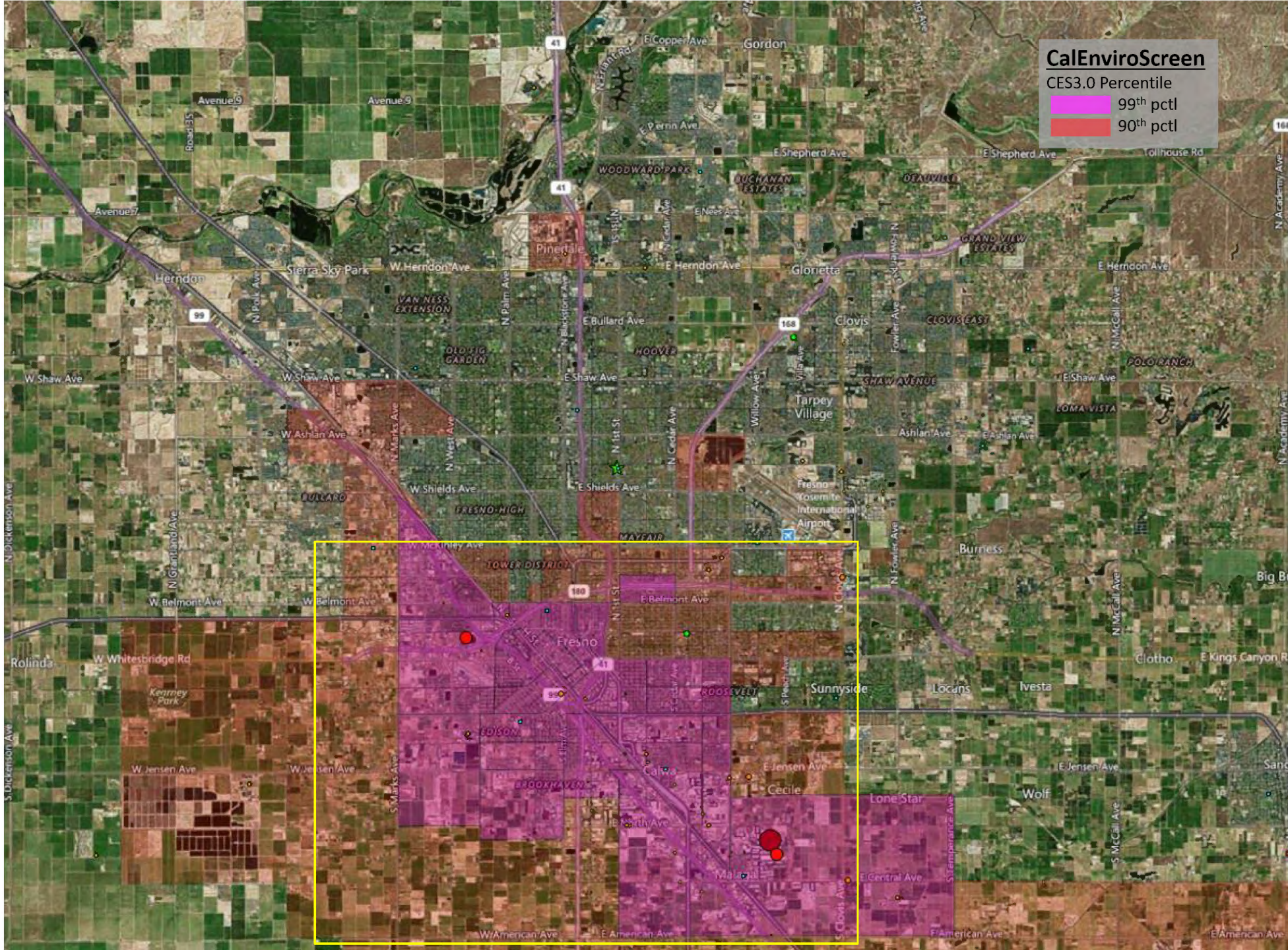
# CalEnviroScreen

CES3.0 Percentile

- 99th pctl
- 90th pctl









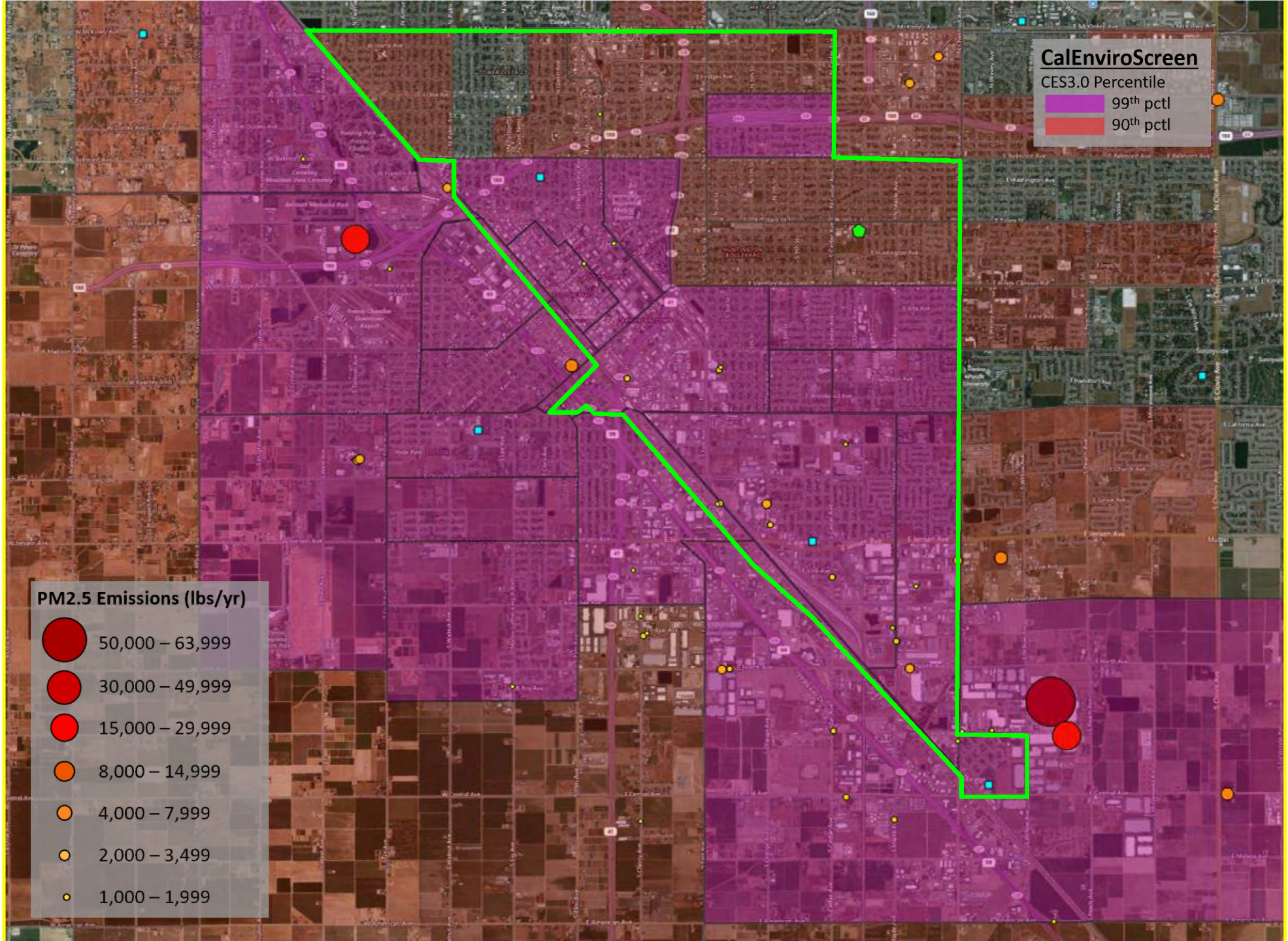
### CalEnviroScreen

CES3.0 Percentile

- 99th pctl
- 90th pctl

### PM2.5 Emissions (lbs/yr)

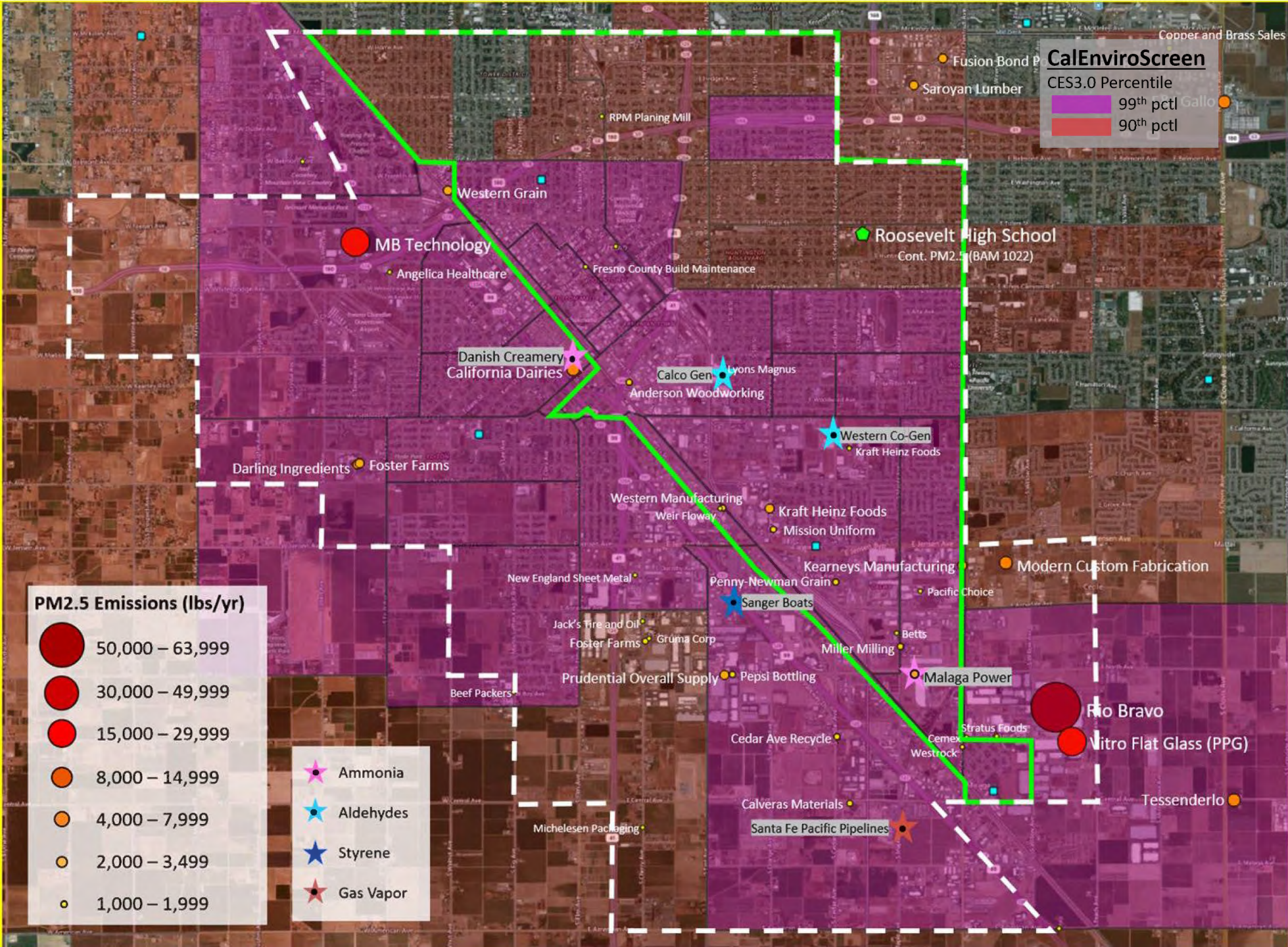
- 50,000 – 63,999
- 30,000 – 49,999
- 15,000 – 29,999
- 8,000 – 14,999
- 4,000 – 7,999
- 2,000 – 3,499
- 1,000 – 1,999











**CalEnviroScreen**  
 CES3.0 Percentile  
 99th pctl  
 90th pctl

**PM2.5 Emissions (lbs/yr)**

- 50,000 – 63,999
- 30,000 – 49,999
- 15,000 – 29,999
- 8,000 – 14,999
- 4,000 – 7,999
- 2,000 – 3,499
- 1,000 – 1,999

- ★ Ammonia
- ★ Aldehydes
- ★ Styrene
- ★ Gas Vapor

MB Technology

Angelica Healthcare

Danish Creamery  
 California Dairies

Darling Ingredients  
 Foster Farms

Beef Packers

New England Sheet Metal

Jack's Tire and Oil  
 Foster Farms  
 Gruma Corp

Prudential Overall Supply

Michelesen Packaging

Western Grain

RPM Planing Mill

Fresno County Build Maintenance

Calco Gen  
 Anderson Woodworking

Western Manufacturing  
 Weir Floway

Penny-Newman Grain  
 Sanger Boats

Cedar Ave Recycle

Calveras Materials  
 Santa Fe Pacific Pipelines

Western Co-Gen  
 Kraft Heinz Foods

Kraft Heinz Foods  
 Mission Uniform

Kearneys Manufacturing

Miller Milling

Pepsi Bottling

Cemex  
 Westrock

Stratus Foods

Westrock

Fusion Bond P  
 Saroyan Lumber

Roosevelt High School  
 Cont. PM2.5 (BAM 1022)

Modern Custom Fabrication

Malaga Power

Rio Bravo

Nitro Flat Glass (PPG)

Tessengerlo

Copper and Brass Sales

Gallo



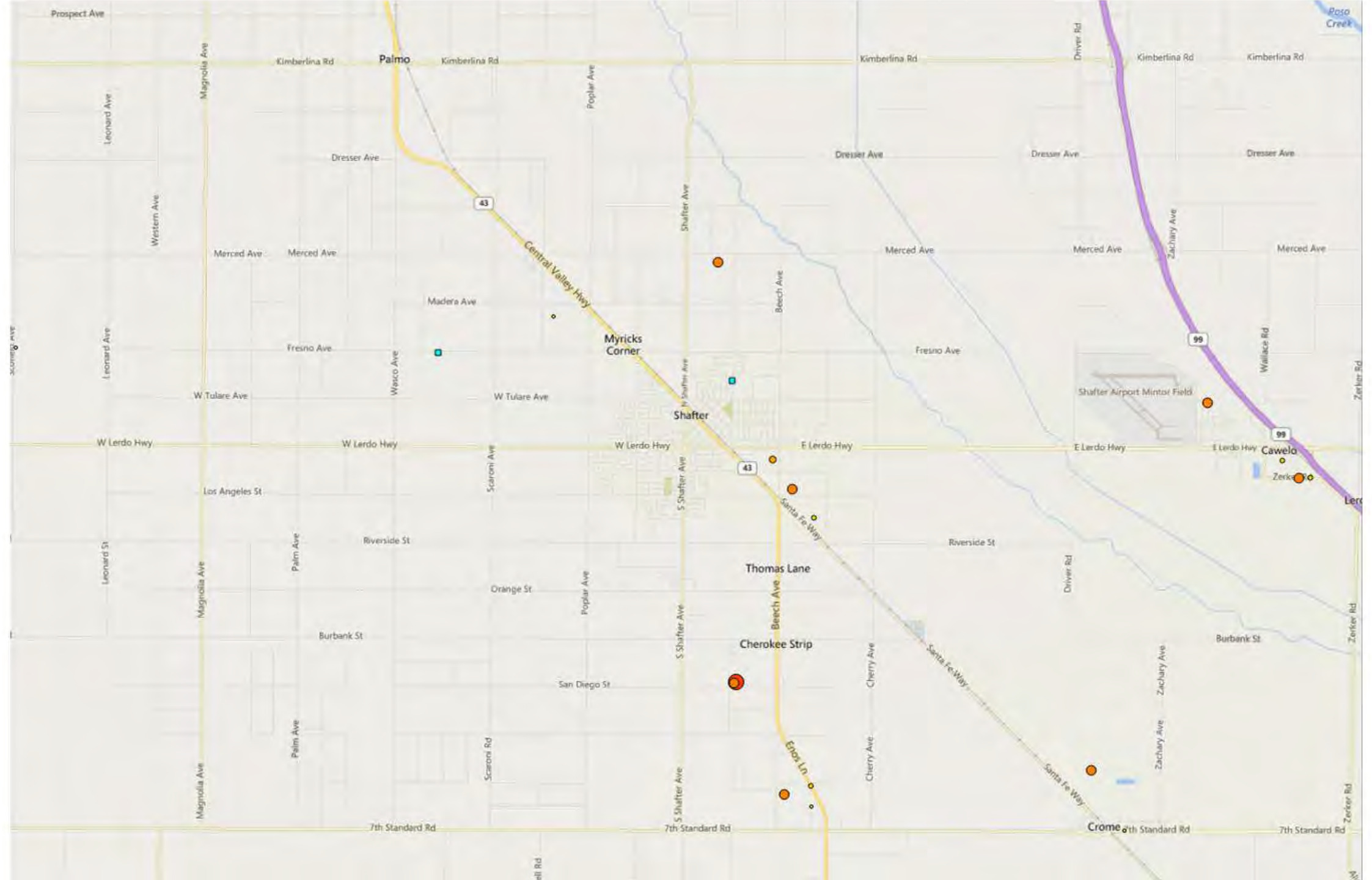


# Air District vs Community Position-Fresno

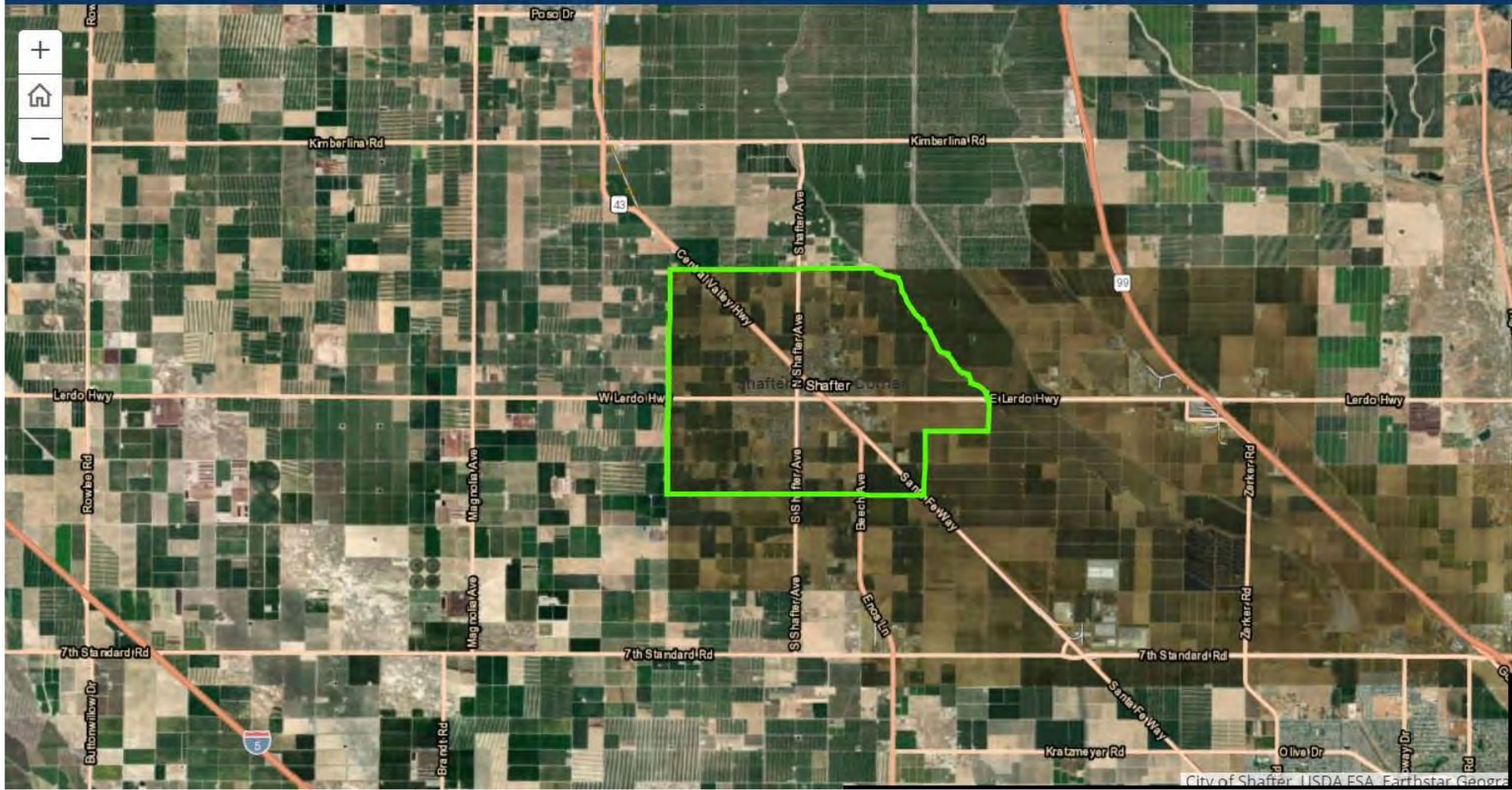
1. **CARB approved boundary cannot be modified to this level.**
  - a. **The community proposed boundary is home to the most disproportionately burdened neighborhoods in the entire state.**
2. **Too large of an area to expand.**
  - a. **Compared to other selected communities, Fresno would not be the largest.**
3. **We have a tight timeline and we need to keep going. No time to bring new people up to speed.**
  - a. **We agree. The process needs to keep moving. We are willing to help bring people up to speed and meet more often to meet the deadlines.**
4. **Southwest is its own community and we can try again another year.**
  - a. **Fresno will likely not be selected anytime soon again.**



Shafter Area

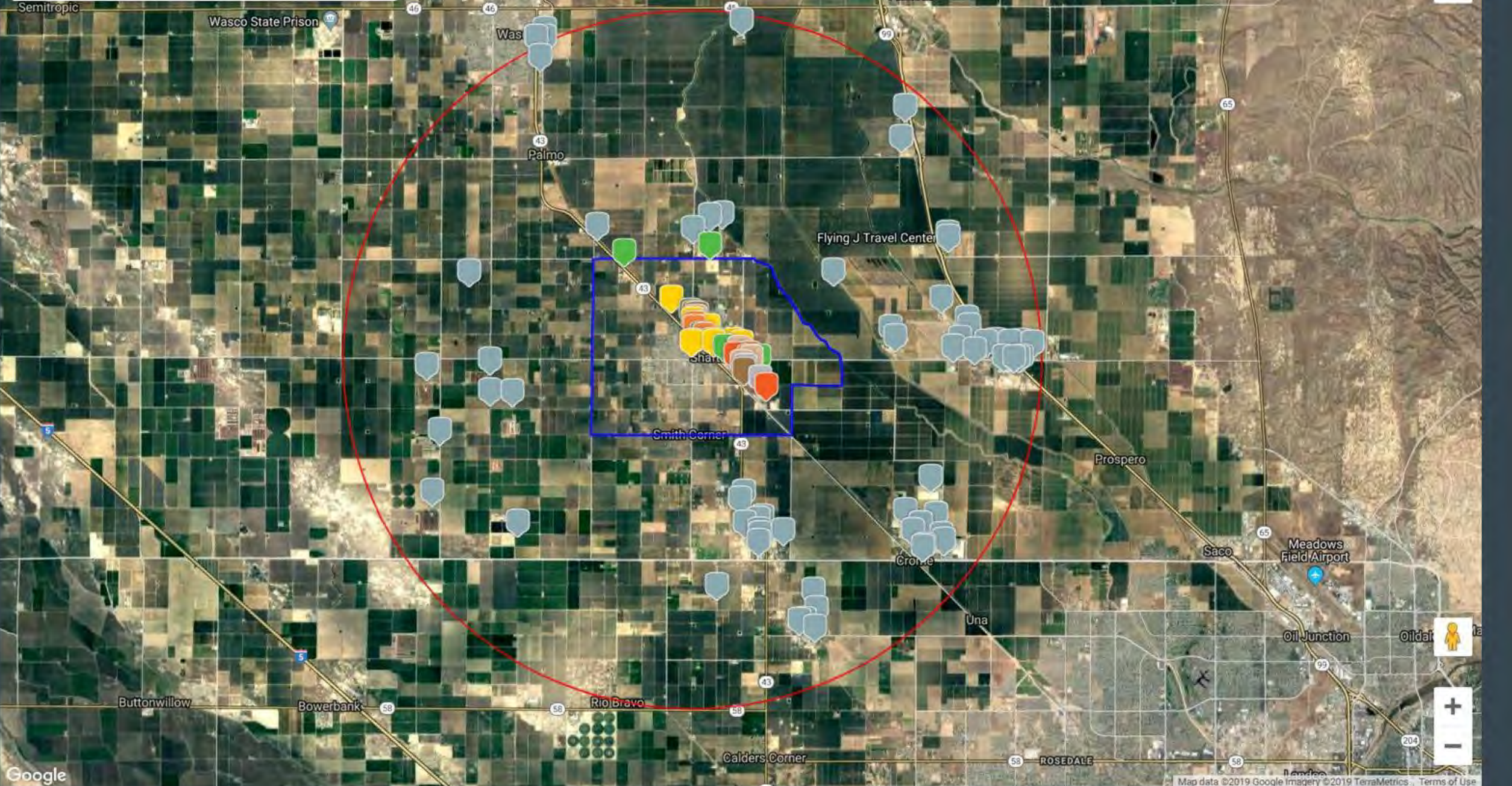








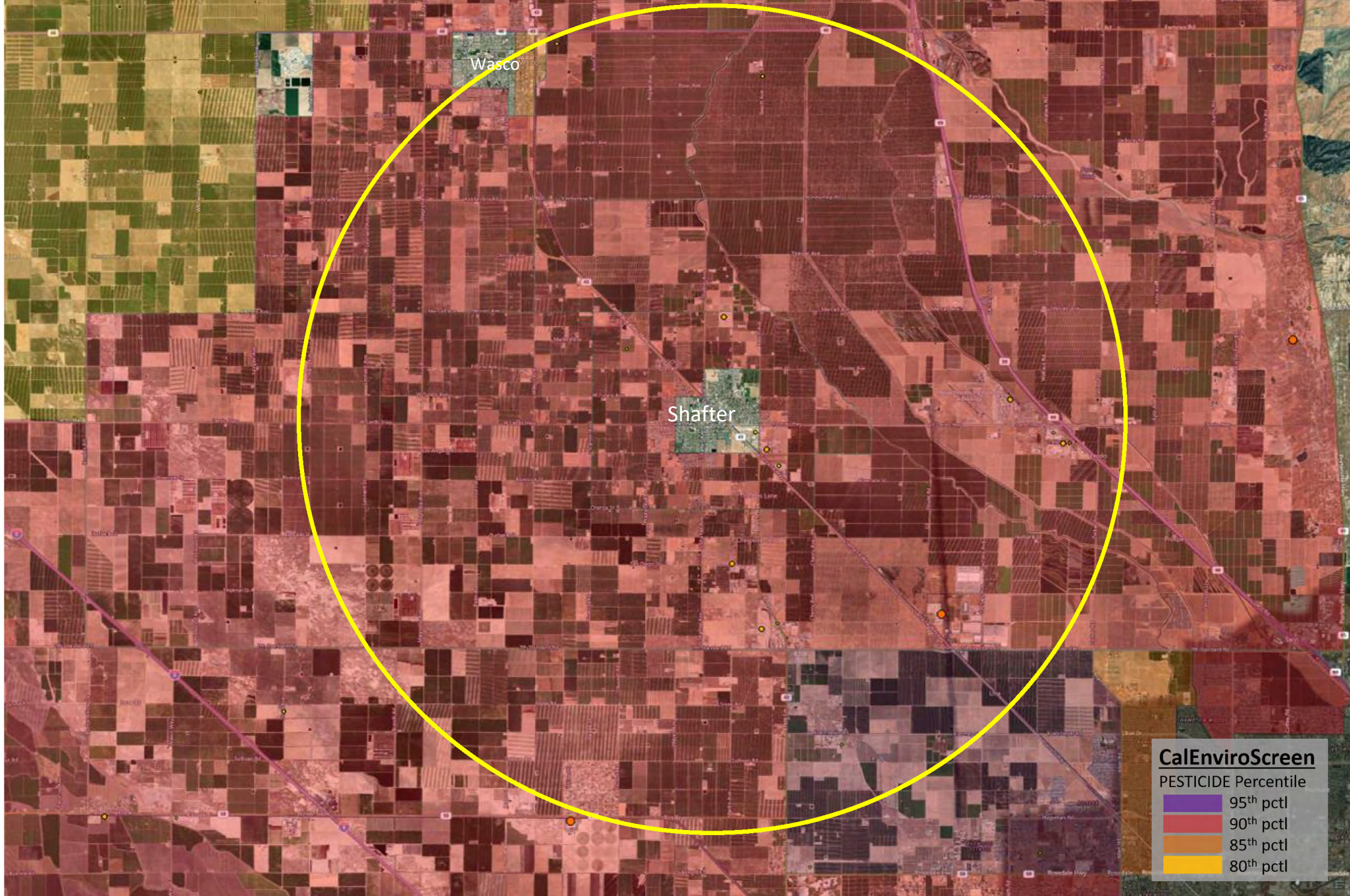
Search Box



Google

Map data ©2019 Google Imagery ©2019 TerraMetrics Terms of Use





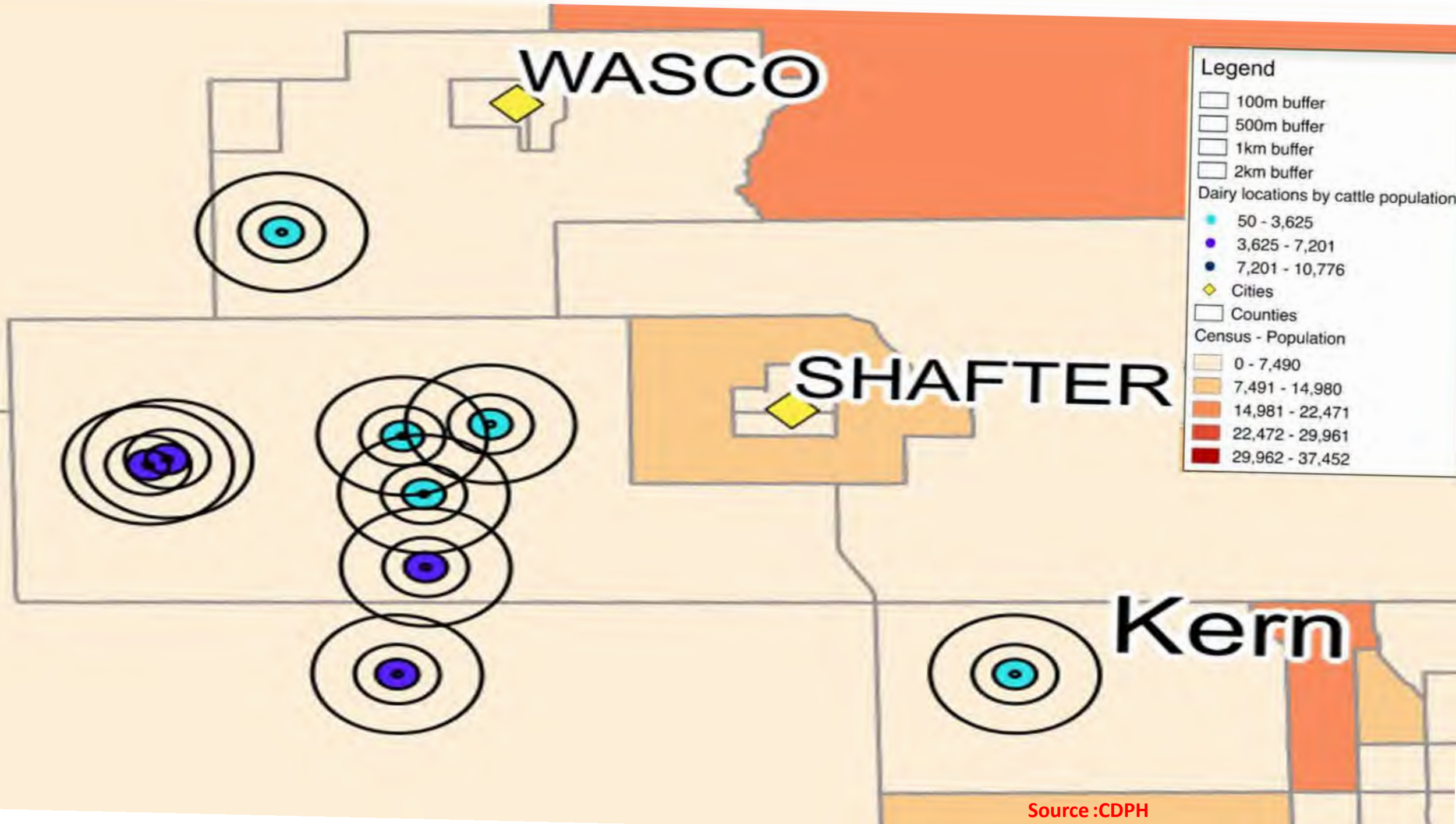
Wasco

Shafter

**CalEnviroScreen**  
PESTICIDE Percentile

95 <sup>th</sup> pctl
90 <sup>th</sup> pctl
85 <sup>th</sup> pctl
80 <sup>th</sup> pctl







A LEGEND

Generators of Hazardous Waste

◆

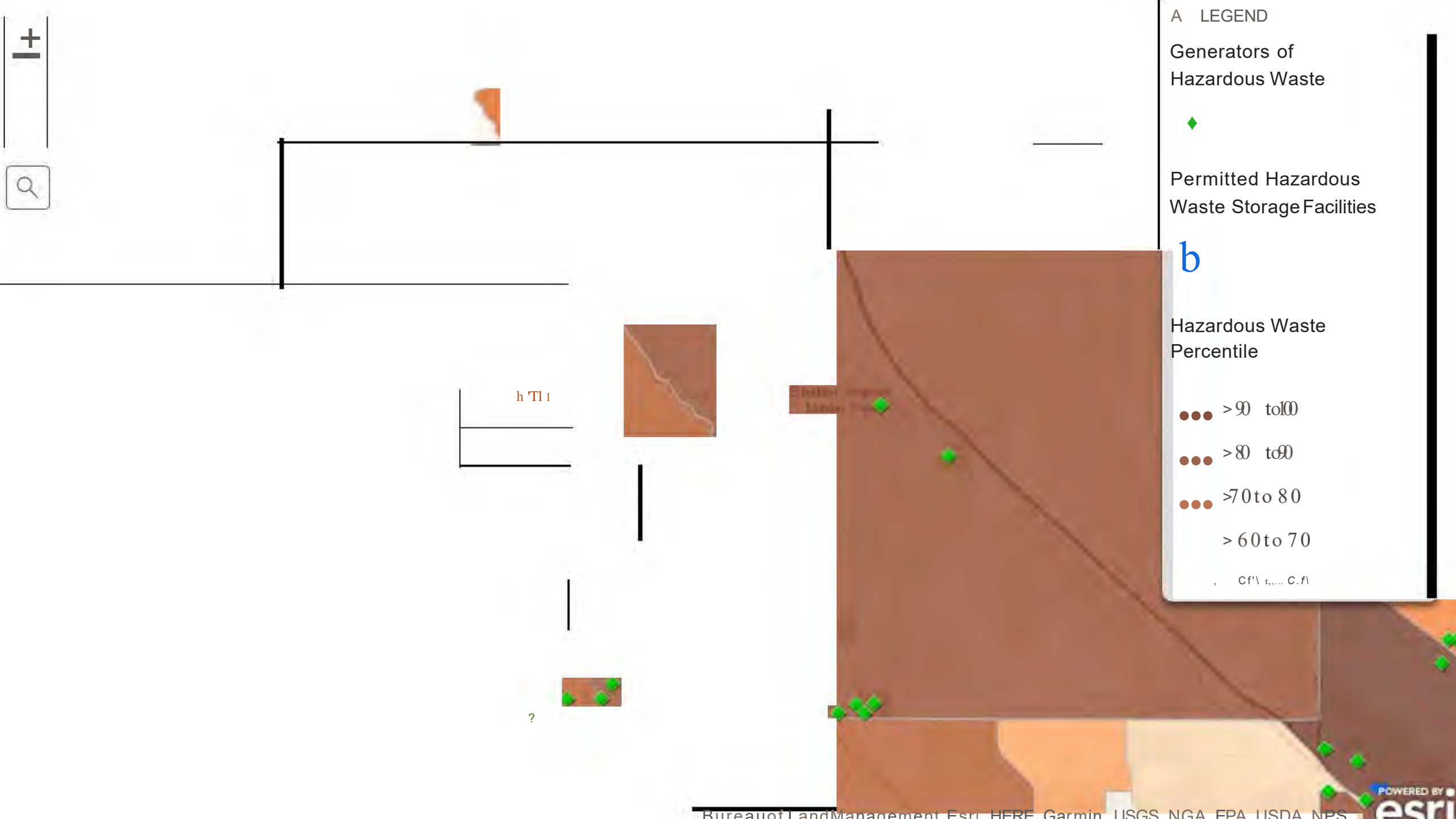
Permitted Hazardous Waste Storage Facilities

**b**

Hazardous Waste Percentile

- >90 to 100
- >80 to 90
- >70 to 80
- >60 to 70

... Cf\ t,.... C. fl





LEGEND

Toxic Release Facilities

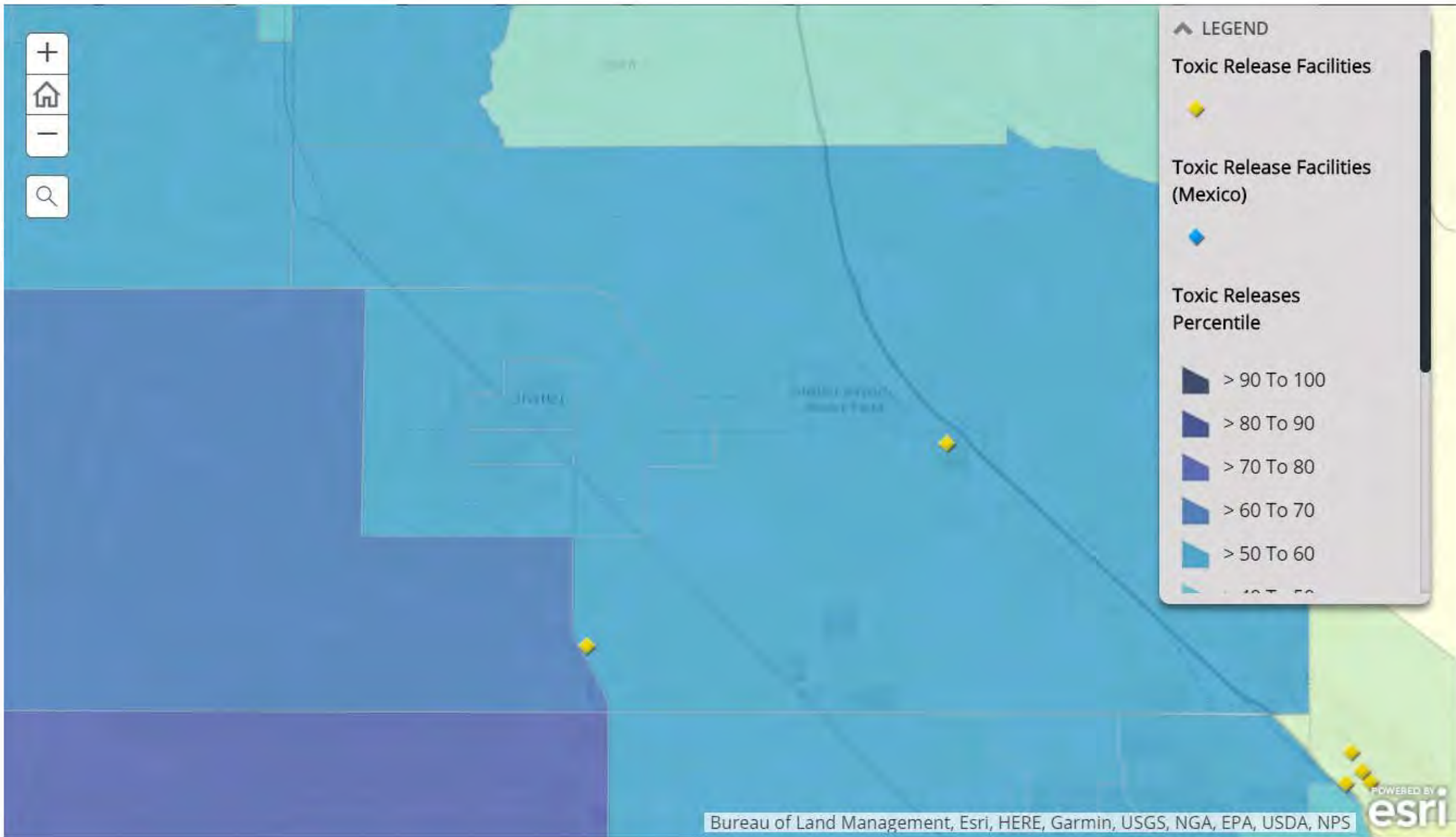
- Yellow diamond

Toxic Release Facilities (Mexico)

- Blue diamond

Toxic Releases Percentile

- > 90 To 100 (Dark blue)
- > 80 To 90 (Medium-dark blue)
- > 70 To 80 (Medium blue)
- > 60 To 70 (Light blue)
- > 50 To 60 (Very light blue)
- < 40 To 50 (Lightest blue)







**PM 2.5 Results**

---

Census Tract 6029004101 has 4,917 people.

The indicator represents the average concentration of fine particulate matter, or PM2.5, in the air. The data is from 2012 to 2014.

This census tract has a concentration of **18.760** micrograms per meter cubed (**18.760  $\mu\text{g}/\text{m}^3$** ). The PM2.5 percentile for this census tract is **100**, meaning it is higher than **100%** of the census tracts in California.

**LEGEND**

PM 2.5 monitors used in 3.0

PM 2.5 Percentile

- > 90 to 100
- > 80 to 90
- > 70 to 80
- > 60 to 70
- > 50 to 60
- > 40 to 50
- > 30 to 40
- > 20 to 30
- --

# Original Inventory V. 7 Mile inventory

## District Permitted Facilities Within Shafter Boundary

DISTRICT REGION	DISTRICT ID	FACILITY NAME	FACILITY DESCRIPTION	ACTIVE PERMITS COUNT	NOx Emissions (tons/year)				
					2013	2014	2015	2016	2017
S	2183	AHDI ENTERPRISES CORP DBA SHAFTER SHELL	GASOLINE DISPENSING	1					
S	8291	BROWN - BRYANT	SOIL AND GROUNDWATER REMEDIATION	1					
S	1737	CALIFORNIA RESOURCES PRODUCTION CORPORATION	CRUDE OIL AND NATURAL GAS PRODUCTION*	41	4.0695	3.3446	5.9591	15.3949	2.9923
S	3701	CITY OF SHAFTER	GOVERNMENT SERVICES	2	0.0083	0.0054	0.0031	0.0032	0.0118
S	3745	CITY OF SHAFTER	GOVERNMENT SERVICES	2	0.0038	0.0018	0.001	0.003	0.0054
S	3362	CITY OF SHAFTER	GOVERNMENT SERVICES	1	0.0016	0.0209	0.0034	0.0343	0.0273
S	3364	CITY OF SHAFTER	GOVERNMENT SERVICES	2	0.0011	0.0138	0.0138	0.0052	0.0256
S	3365	CITY OF SHAFTER	GOVERNMENT SERVICES	2	0.0904	0.0457	0.0457	0.0052	0.0193
S	2599	CODE PRECAST PRODUCTS INC	CONCRETE BATCH PLANT	2					
S	7322	CON-FAB CALIFORNIA LLC	CONCRETE PRODUCTS	7		0.1933	0.1673	0.2305	0.0309
S	8952	FOREVERBOARD CALIFORNIA INC	DRYWALL MANUFACTURING	1					
S	2139	FOX PETROLEUM INC.	GASOLINE DISPENSING	1					
S	6593	GLOBAL FABRICATORS	METAL FABRICATION	3					
S	8071	GOLDEN LIVING CENTER - SHAFTER	SKILLED NURSING CARE FACILITY	1		0.0027	0.0027	0.0027	0.0027
S	8067	GREG'S PETROLEUM	GASOLINE DISPENSING FACILITY	1					
S	3474	HELENA CHEMICAL COMPANY	AGRICULTURAL CHEMICALS	1					
S	2369	JACO HILL	GASOLINE DISPENSING	1					
S	2417	JEFFRIES BROTHERS INC	GASOLINE DISPENSING	1					
S	239	JEFFY'S STORE	GASOLINE DISPENSING	1					
S	3891	JOSE LUIS ALBERTO	AUTO BODY COATING OPERATION	1					
S	2443	KERN COUNTY FIRE STATION #32	FIRE PROTECTION	1					
S	105	MEYER'S BIG STOP	GASOLINE DISPENSING	1					
S	7801	OMNI FAMILY HEALTH	HEALTH AND ALLIED SERVICES	2	0.0153	0.0153	0.0038	0.0034	0.0034
S	1167	PACIFIC BELL TELEPHONE CO (DBA AT-T CA)	TELECOMMUNICATIONS	1	0.016	0.0154	0.014	0.0132	0.0149
S	1288	S - J QUICK STOP	GASOLINE DISPENSING	1					
S	1732	S & A MARKET	GASOLINE DISPENSING	1					
S	7834	SHAFTER COLLISION	AUTOMOTIVE BODY REPAIR AND PAINT SHOP	1					
S	539	SHAFTER-WASCO GINNING COMPANY	COTTON GINNING	2					
S	7041	SHAR CRAFT, INC.	SPECIAL TRADE CONTRACTORS	4					
S	7674	VERIZON WIRELESS "NORTH SHAFTER"	TELECOMMUNICATIONS	1	0.0064	0.0036	0.0045	0.0043	0.0021
S	1301	WILBUR-ELLIS COMPANY	AGRICULTURAL CHEMICALS	1					

\*Includes emissions from equipment spread over a wide area, not all within the Shafter boundary.

## District Permitted Facilities Within 7-Mile Radius

## NOx Emissions (tons/year)

DISTRICT REGION	DISTRICT ID	FACILITY NAME	FACILITY DESCRIPTION	ACTIVE PERMITS COUNT	NOx Emissions (tons/year)				
					2013	2014	2015	2016	2017
S	4152	APSG WHOLESALE	AUTO BODY SPRAY COATING	2					
S	3161	AT-T MOBILITY	TELECOMMUNICATIONS	1	0.0163	0.0025	0.0025	0.0032	0.0016
S	6698	AT-T MOBILITY	TELECOMMUNICATIONS	1	0.0027	0.0013	0.0042	0.0033	0.0115
S	5211	AUKEMAN DAIRY	DAIRY FARMS	6					
S	8022	BAKER HUGHES OILFIELD OPERATIONS LLC	CHEMICAL RECEIVING, STORAGE AND DISTRIBUTION	2					
S	1262	BAYER CROP SCIENCE	AGRICULTURAL PRODUCTS PROCESSING	2	0.2822	0.2822	0.2907	0.0232	0.0232
S	704	BAYER CROPSCIENCE	COTTON GINNING	1					
S	2501	BIDART COLD STORAGE INC	AGRICULTURAL PRODUCTS	2					
S	1872	BKSFQ QUALITY DISTRIBUTION CENTER INC	AGRICULTURAL PRODUCTS PREPARATION	4					
S	7351	B-L CASING SERVICE, LLC	OIL AND GAS FIELD SERVICES	1					
S	3461	BUILDING MATERIALS MFG. CORP. (dba GAF)	FIBERGLASS MAT MANUFACTURING OPERATION	3	0.0026	0.0010	0.0010	0.0014	0.0014
S	7895	CAL COAST ACIDIZING SERVICE	OIL & GAS FIELD SERVICES	2					
S	7122	CALIFORNIA PAPER PRODUCTS, LLC	ASPHALT FELTS AND COATINGS	3			0.4247	0.4247	0.3168
S	3915	CITY OF SHAFTER	GOVERNMENT SERVICES	1	0.0041	0.0680	0.0369	0.0316	0.0597
S	6910	CITY OF SHAFTER	GOVERNMENT SERVICES	1	0.0090	0.0827	0.0109	0.0109	0.0370
S	8394	CITY OF SHAFTER	GOVERNMENT SERVICES	1			0.0013	0.0050	
S	6849	CLEAN ENERGY SYSTEMS, INC.	ELECTRIC POWER GENERATION	1					
S	6935	DENBESTE MANUFACTURING, INC.	METAL PARTS AND PRODUCTS COATING OPERATION	1					
S	2813	DJ'S FOOD MART	GASOLINE DISPENSING	1					
S	2033	ELK CORPORATION OF TEXAS	ASPHALT FELTS AND COATINGS	12	0.4269	0.3992	0.4633	0.3741	0.4132
S	6639	FAJAL FARMS 2	DAIRY	6					
S	3860	GMC ROOFING - PAPER PRODUCTS	ASPHALT FELTS AND COATINGS	7					
S	1183	GOLDEN EMPIRE CONCRETE COMPANY	READY-MIX CONCRETE	4					
S	5281	HYPONEX CORPORATION	AGRICULTURAL CHEMICALS	8					
S	4283	INDUSTRIAL DESIGN - CONSTRUCTION INC	METAL PARTS AND PRODUCTS COATING	1					
S	1736	INLAND CROP DUSTER INC	CROP SERVICES - AERIAL DUSTING	2					
S	4291	J. R. BODY WORK'S VOC EDUCATION	AUTO BODY SPRAY COATING	1					
S	2360	JACO HILL	GASOLINE DISPENSING	1					
S	8716	JEFFRIES BROTHERS INC	COMMUNICATION SERVICES	1					0.0001
S	1778	JR SIMPLOT CO/SIMPLOT GROWER SOLUTIONS	PHOSPHATIC FERTILIZERS	3					
S	7431	KERN SCHOOLS FEDERAL CREDIT UNION	CREDIT UNION	1	0.0132	0.0073	0.0073	0.0078	0.0083
S	7516	LARRY BASHOR SANDBLASTING	ABRASIVE BLASTING AND SPRAY PAINTING	5					
S	3562	LERDO CHEVROON	GASOLINE DISPENSING	2					
S	7748	LUFKIN INDUSTRIES INC.	OILFIELD SERVICES	2					
S	4803	MARTIN HEIN RANCH COMPANY - PA2	AGRICULTURAL CROP PRODUCTION	10	84.1658	90.4217	8.3537	8.3537	2.8373
S	2995	M-I SWACO	OIL AND GAS FIELD SERVICES	12					
S	8	NIKKEL IRON WORKS INC	FABRICATED METAL PRODUCTS	2					
S	7876	NORRIS PRODUCTION SOLUTIONS	METAL PARTS AND PRODUCTS COATING OPERATION	1					
S	1316	NORTH OF RIVER SANITARY DIST	SEWERAGE SYSTEM	3	0.7340	0.5222	0.6372	0.5707	0.6669
S	5141	OASIS HOLSTEIN DAIRY	DAIRY FARM	6					
S	5058	OHANNESON ENTERPRISES	GENERAL FARMS, PRIMARILY CROP	5					
S	4170	PAGE INDUSTRIAL SERVICES INC	AUTO BODY SPRAY COATING	2	0.8383	0.5708	0.3729	0.4933	0.4933
S	6646	PERFORMANCE FOOD GROUP	GROCERIES, WHOLESALE	1	0.3417	0.3417	0.1675	0.1898	0.3736
S	5257	PHOENIX CEMENT COMPANY	CONSTRUCTION MATERIALS	2					
S	2012	PILOT TRAVEL CENTERS LLC	GASOLINE DISPENSING	1					
S	71	PLAINB LPG SERVICES LP	NATURAL GAS PRODUCTION	28	12.1825	10.8231	10.9332	10.7809	11.5312
S	3919	PREMIER SANDS LLC	SAND AND GRAVEL	23					
S	7886	RESA POWER SOLUTIONS	ELECTRICAL SERVICES	1					
S	8340	RIVERWOOD GAS AND OIL LLC	CRUDE OIL PRODUCTION	8					
S	8480	ROLL REAL ESTATE DEVELOPMENT LLC	DISTRIBUTION CENTER	2					
S	8529	ROSS STORES INC	DISTRIBUTION CENTER	3				0.1175	0.1167
S	872	SAVAGE COAL SERVICE CORP	NONMETALLIC MINERALS	7	0.0047	0.0047	0.0047	0.0047	0.0047
S	82	SHELL PIPELINE COMPANY LP	PETROLEUM PIPELINES	1			0.0049	0.0155	0.0465
S	876	SJV QUALITY COTTON	FEDERAL GOVERNMENT RESEARCH	2	0.0025	0.0025	0.0016	0.0016	
S	6706	SKYVIEW DAIRY	DAIRY FARMS	7					
S	2151	SOUTH VALLEY ALMOND COMPANY LLC	TREE NUTS	6					
S	4755	STARRH and STARRH COTTON GROWERS	COTTON	43					
S	4297	SUN WORLD INTERNATIONAL	AGRICULTURAL PRODUCTS PROCESSING	4	0.0175	0.0175	0.0041	0.0038	0.0038
S	3934	TARGET DISTRIBUTION CENTER	DEPARTMENT STORE	1	0.1962	0.1953	0.2498	0.2277	0.1852
S	5060	TJAARDA DAIRY	DAIRY FARMS	10					
S	1395	VERIZON WIRELESS-SHAFTER	TELECOMMUNICATIONS	1	0.0044	0.0060	0.0060	0.0049	0.0023
S	8231	WEATHERFORD ARTIFICIAL LIFT SYSTEMS, LLC	OIL AND GAS FIELD SERVICE	6					
S	2915	WEST COAST PIPE INSPECTION	GASOLINE DISPENSING	1					
S	8367	WONDERFUL ORCHARDS LLC	AGRICULTURAL PRODUCTS PROCESSING	1					

# Air District vs Community Position-Shafter

- 1. Boundaries should be expanded.**
  - **Committee members expressed interest in expanding boundaries to protect surrounding communities**
  
- 2. Voting and consensus needed reform**
  - **During the first Committee meetings, community members felt overlooked and lost as to a proper voting system within the committee.**
  
- 3. Some members in the committee may have a conflict of interest**
  - **residents feel their opinion is washed out by potential special interests on the committee that benefit from a slower/non inclusive process to reduce emissions**
  
- 4. Distributing meeting prep materials in a timely manner**
  - **Due to time restraints during the meeting, residents have asked for prep materials/agenda with enough time beforehand to properly prepare**



Thank you  
Any questions?