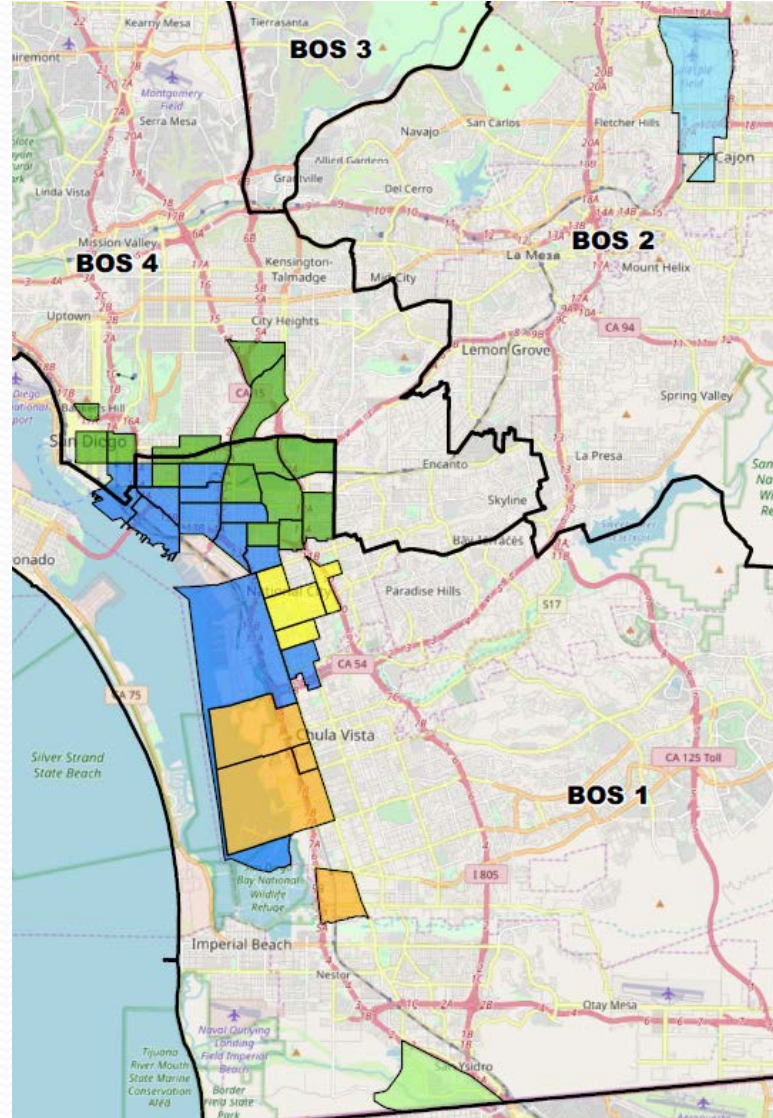


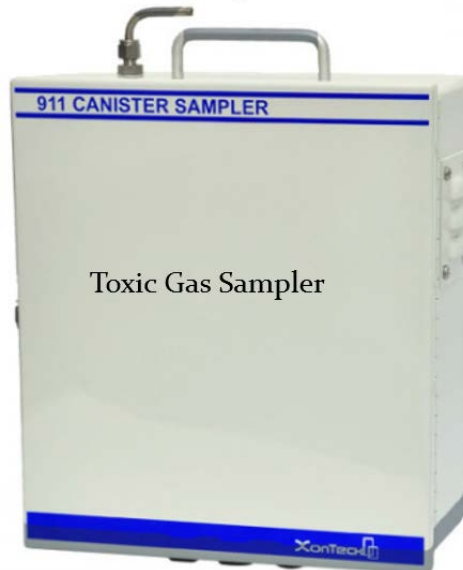
Disadvantaged Communities in San Diego County



MONITORING PLANS



Met One BC-1060



Toxic Gas Sampler



This car measures air quality



Black Carbon Continuous Sampler

PROGRESS

- Committee has approved:
 - ❑ Two monitoring locations
 - ❑ What pollutants to measure at these two sites,
 - ❑ Mobile monitoring

- We have commenced with mobile monitoring
 - ❑ This data will:
 - ❖ help us best locate stationary monitors,
 - ❖ locate elevated pollution levels that need immediate reductions

- We have commenced with particulate sampling at Sherman Heights Elementary School

EMISSION REDUCTIONS

- While our community was selected for monitoring only, we are actively seeking emission reductions:
 - Increased stationary source inspections
 - Increased mobile source inspections
 - ❖ Truck inspections at border crossings and within community
 - ❖ Truck idling inspections within community
 - ❖ Off-road equipment inspections within community and outside the community
 - 14 mobile source emission reduction projects recently approved for incentive funding

CONTINUED FUNDING KEY

- Continued incentive funding needed to bring immediate emission reductions to community
 - ❑ Immediate emission reductions continue to be available and are extremely important for the community residents
 - ❑ We are receiving more funding requests than there are funds
- Continued funding for implementation is necessary to:
 - ❑ Significant monitoring work
 - ❑ Third party laboratory analysis
 - ❑ Emission inventory
 - ❑ Rule analysis and updates,
 - ❑ Significant outreach
 - ❑ Increased inspections



**THANK YOU FOR
YOUR TIME**