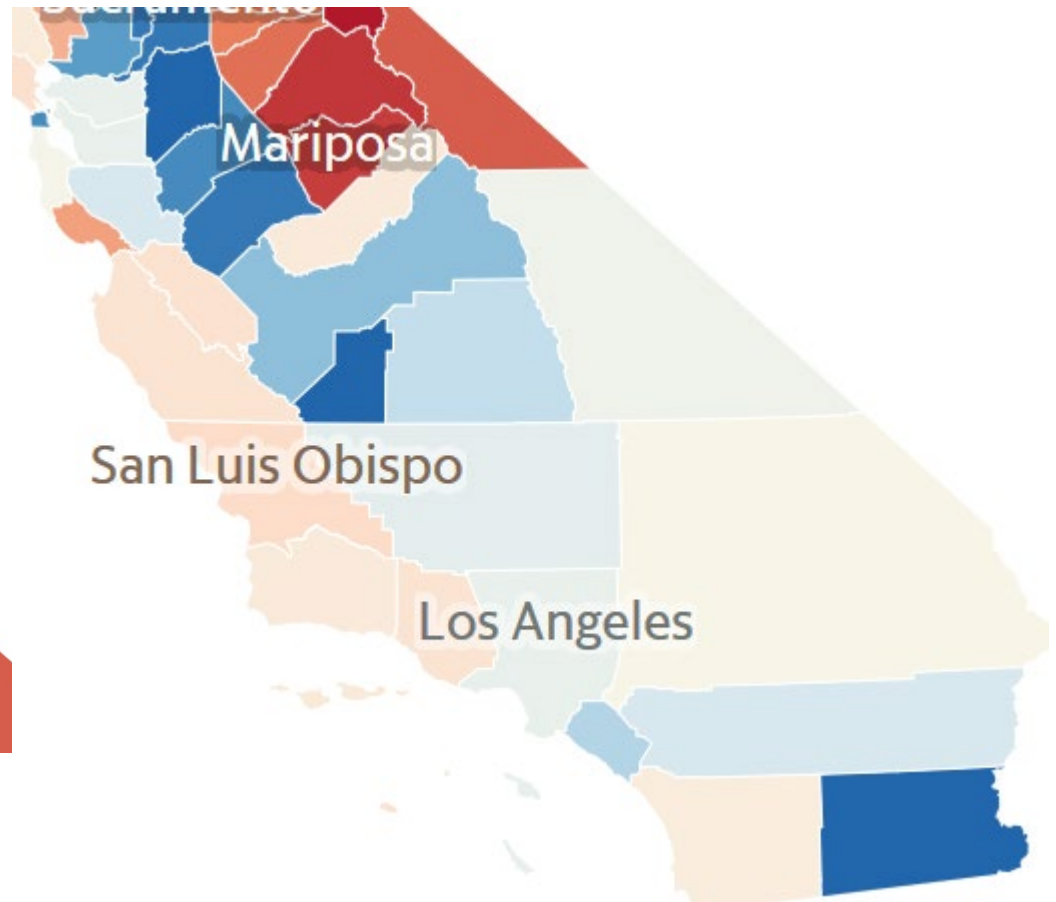
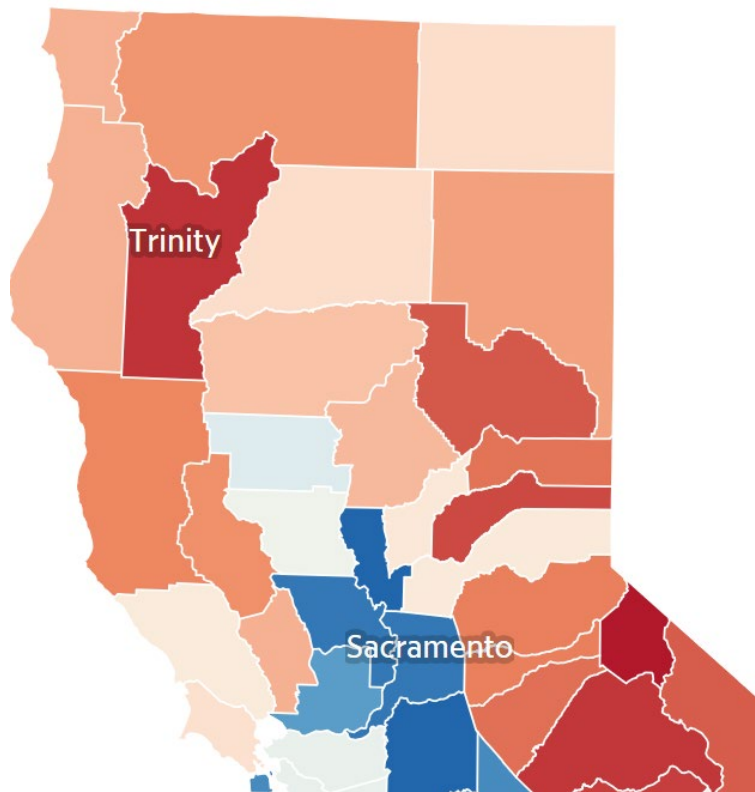


**Joint Hearing
Assembly Natural Resources Committee
and
Assembly Local Government Committee**

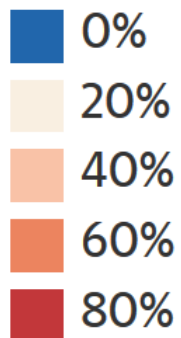
Improving Fire Prevention in California

Feb 25, 2019

Kate Dargan, Former CA State Fire Marshal



Percent of Homes



2 Million Homes

(Verisk Analytics/ISO)

Almost all are homes constructed prior to the 2008
CA Building Code changes

Hardening Timeline

1964



**Defensible
Space**

1991



Wood Roofs

2008



**Ignition-Resistant
Buildings**

2019 - Harden Existing Buildings?

WHAT IS A HARDENED HOME?

- ✓ Building materials and construction techniques that resist embers
- ✓ Defensible Space
- ✓ Maintained

Examples of Community Tools

Landscaping Regulations require property owners to manage hazardous vegetation and maintain their properties.

Watershed Management Plans reduce wildfire through fuel treatments, protecting vital water resources.

Forest Management Projects reduce fuels within the wildland-urban interface (WUI).

Building Codes require ignition-resistant construction materials for new developments and retrofits.

Land Preservation Tools encourage agricultural lands to buffer development from wildfires.

Steep Slope Ordinances restrict development within high wildfire-risk areas.

Land Use and Development Codes incentivize developers to plan open space and recreational trails, creating fuel breaks.

Subdivision Design Standards require risk reduction features, such as minimum road widths, secondary access, and adequate water supply.

Local Governments support fire adapted communities through good land use planning.



A Statewide Action Plan

Key Elements that need improving

- ✓ Hardened Communities need *many* hardened homes
- ✓ **Educate** and support fire prevention and building officials
- ✓ Invest in buildings retrofits and **D Space**
- ✓ Invest in **research**
- ✓ Create **operational partnerships** between state and locals
- ✓ **Assess** both Hazard and **Risk**

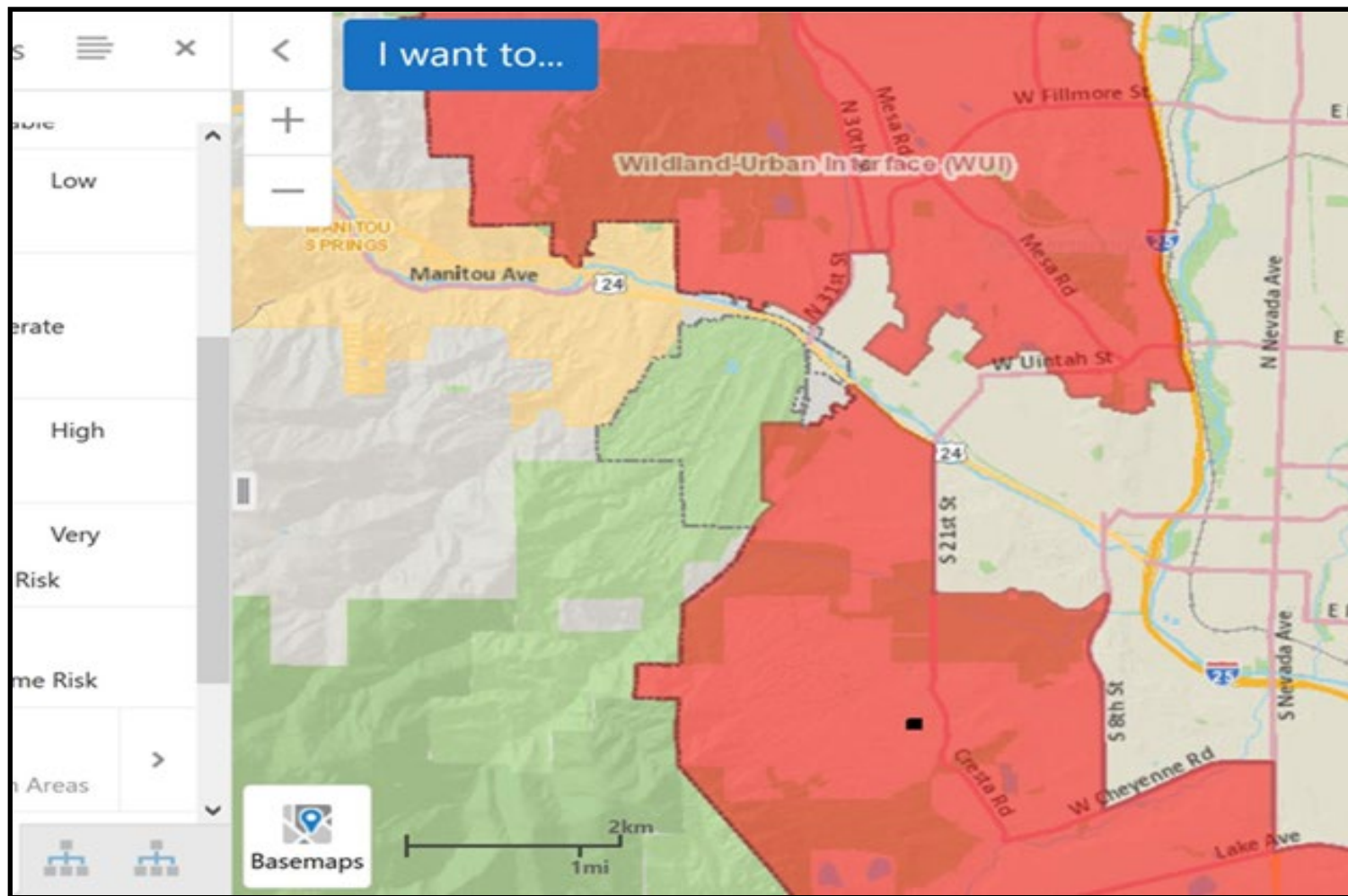
Wildfire Hazard and Risk

Fire Hazard Severity Maps

The probability and severity of a wildfire

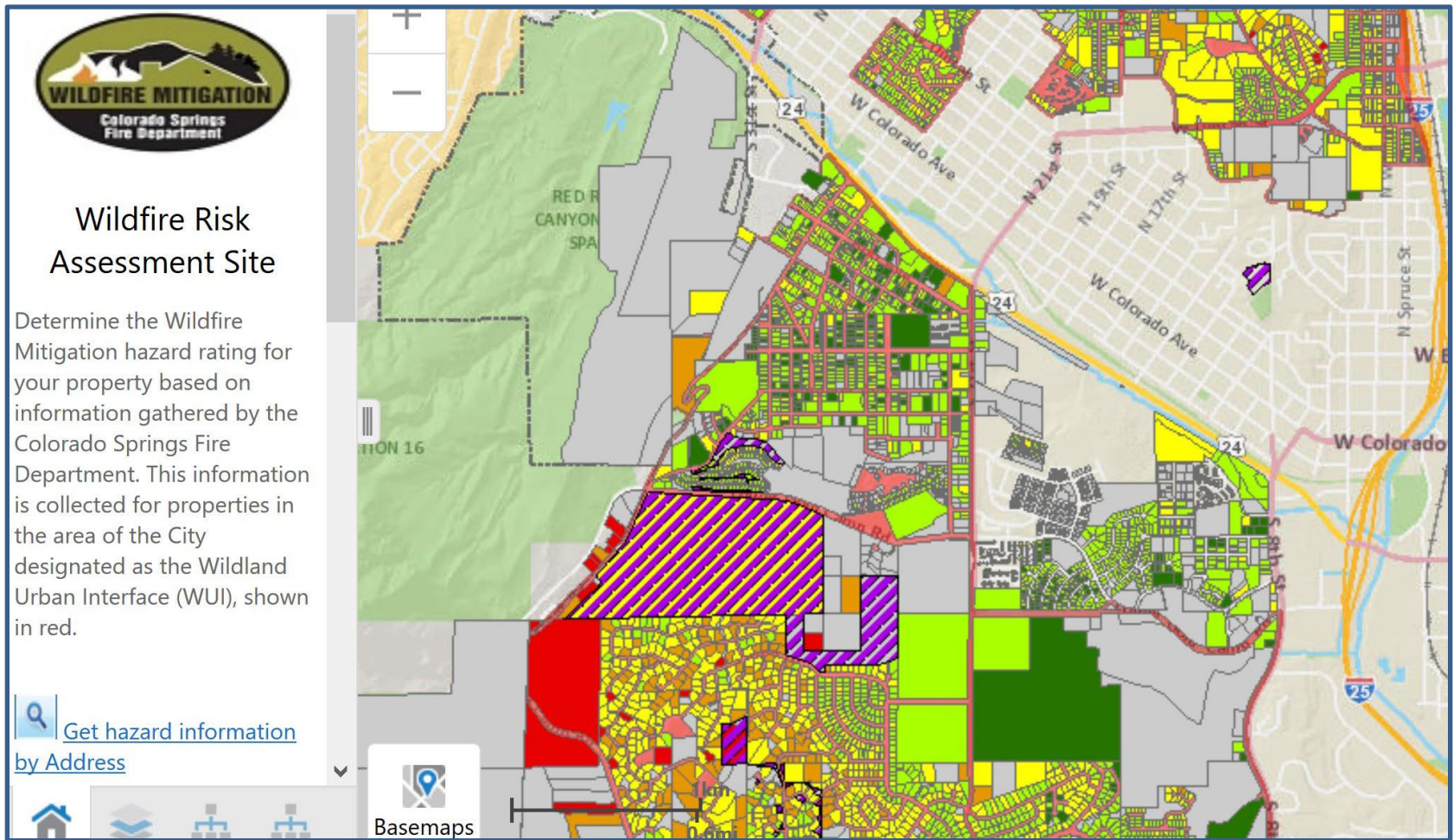
Wildfire Risk Maps

The likely damage that wildfire will cause



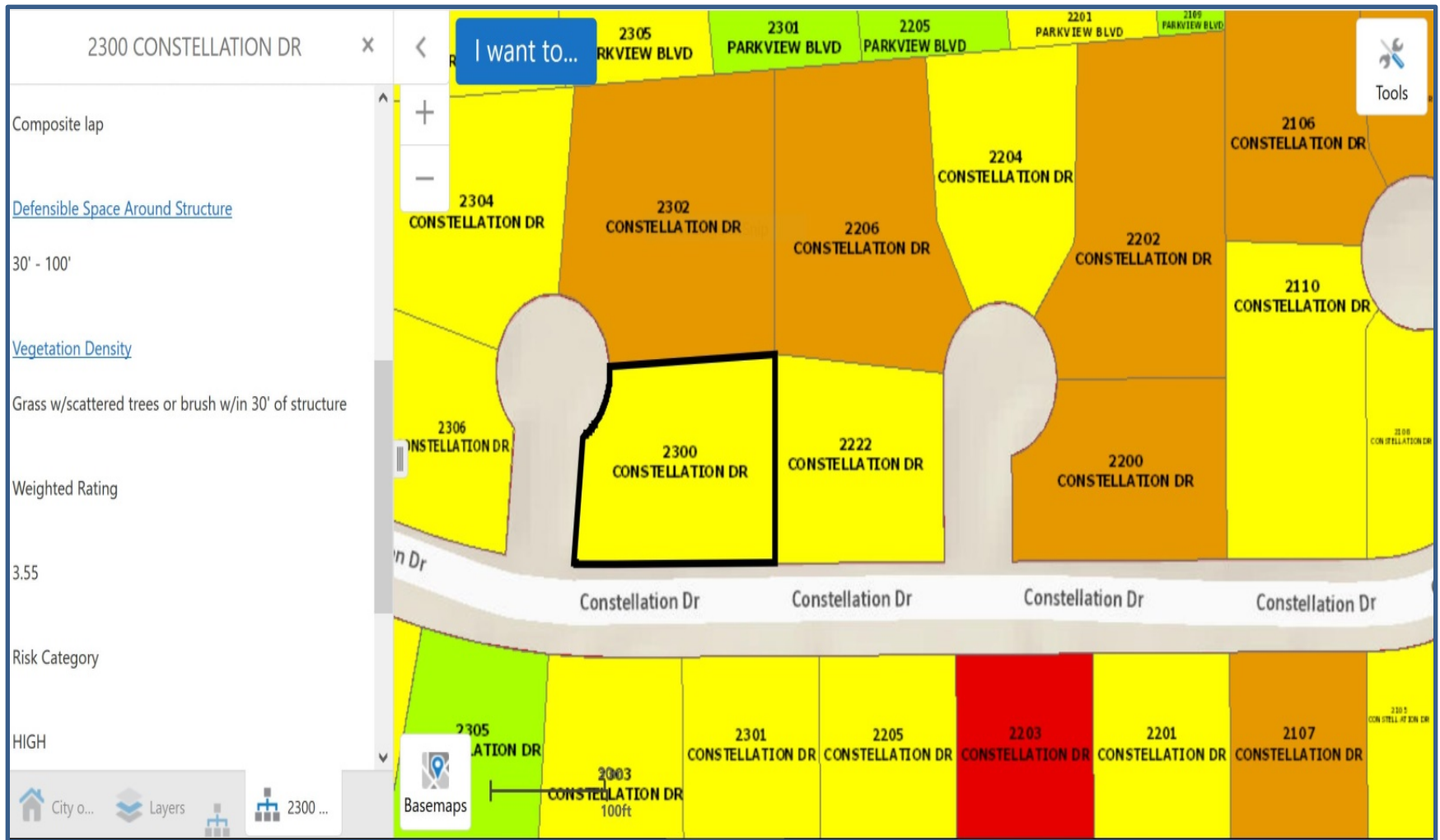
Fire Hazard Severity Zone (CO Springs)

Fire Hazard tells us where the problem is located and how severe the problem is



Fire Risk by parcel (CO Springs)

Risk Assessment tells us what actions to take about that hazard and how to reduce the damaging consequences of that hazard



Parcel-based Risk Map for Homeowners and Responders

A risk map communicates effective mitigation measures and demonstrates the effectiveness of our investment in resiliency.