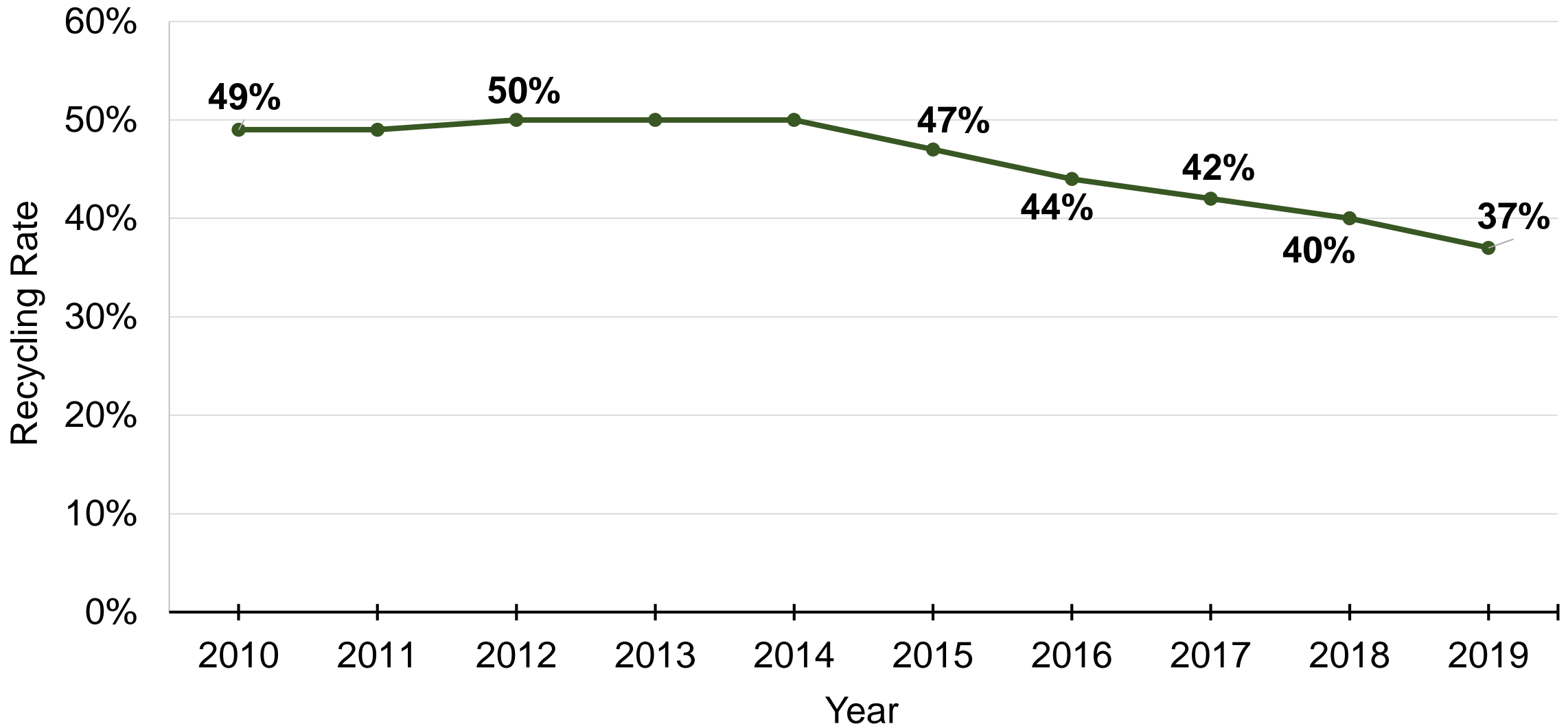




California Recycling Update: COVID-19 Impacts

Zoe Heller
Policy Director

California Recycling Rate



2018 California Waste Characterization Study

Plastic packaging disposed

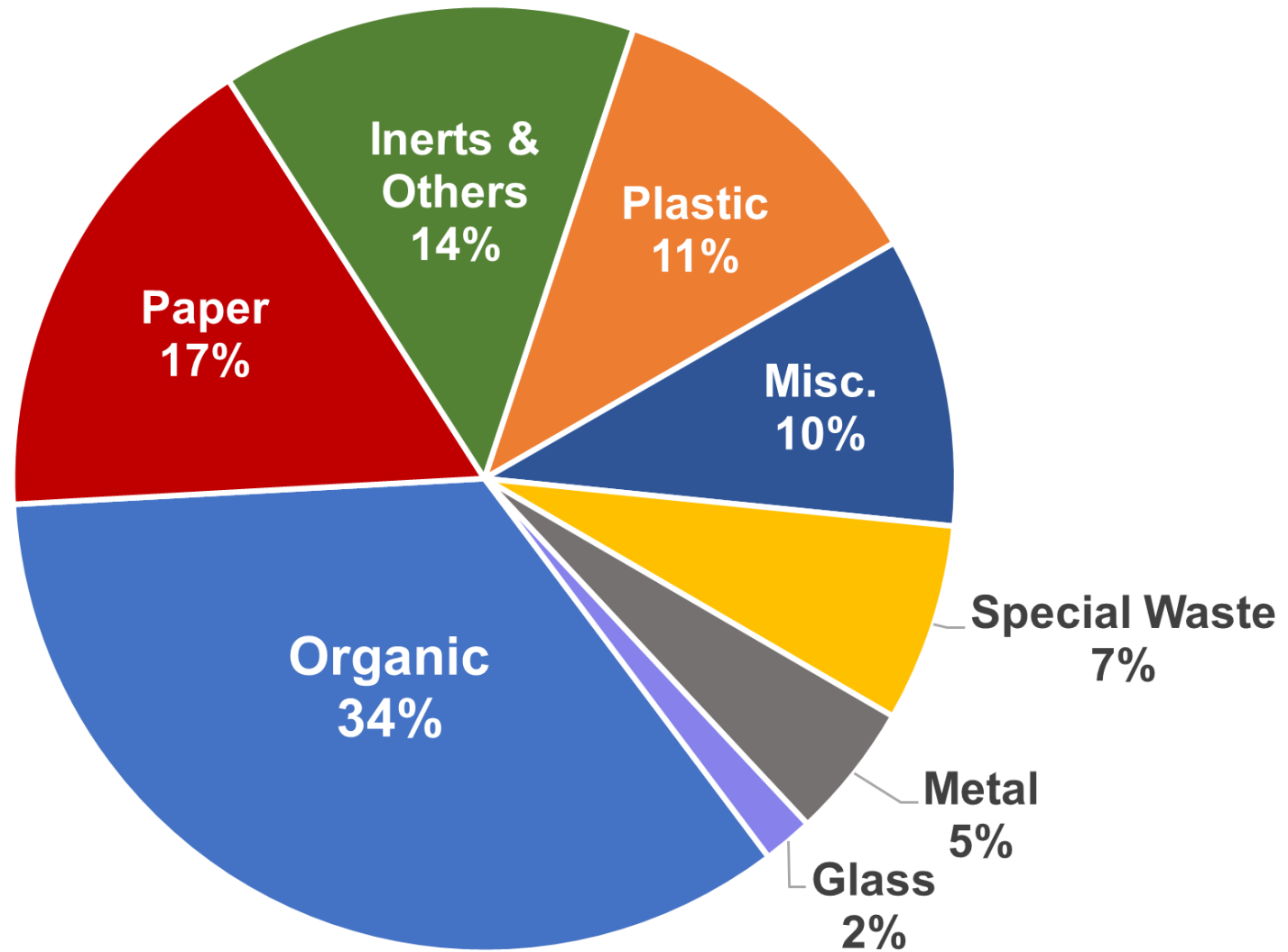
- 2.9 million tons in 2018 (7.6%)*
- 2 mil tons in 2014 (6.7%)

Paper packaging disposed

- 5.6 mil tons in 2018 (13.6%)
- 4.3 mil tons in 2014 (14.1%)

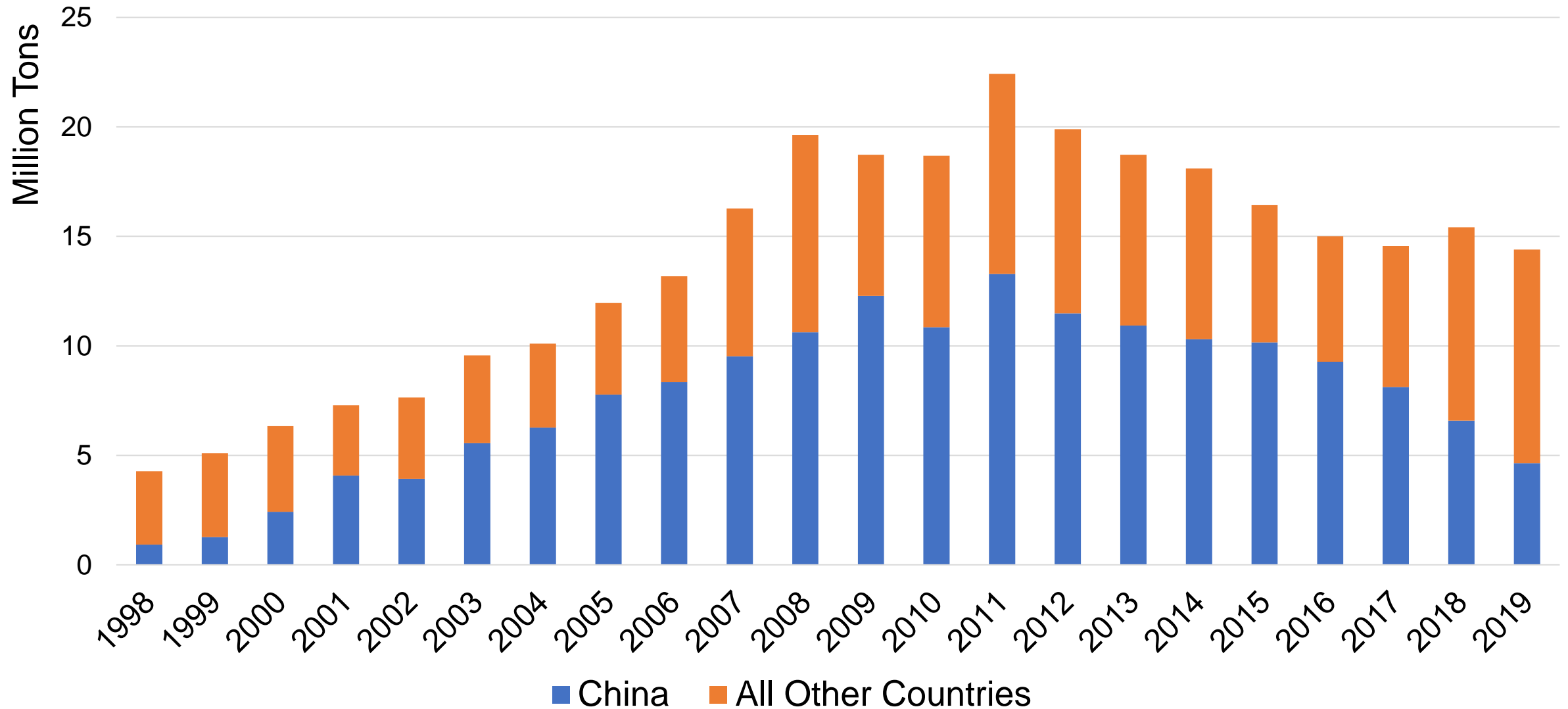
All packaging and packaging-related material types:

- 10.4 mil tons in 2018 (25.8%)
- 7.8 mil tons in 2014 (25.1%)



* (%) - of total tonnage/all materials disposed

Seaborne Export of Recyclable Commodities (1998 – 2019)



Shifting international markets and policies



China solid waste ban

SE Asia restrictions

Basel Convention

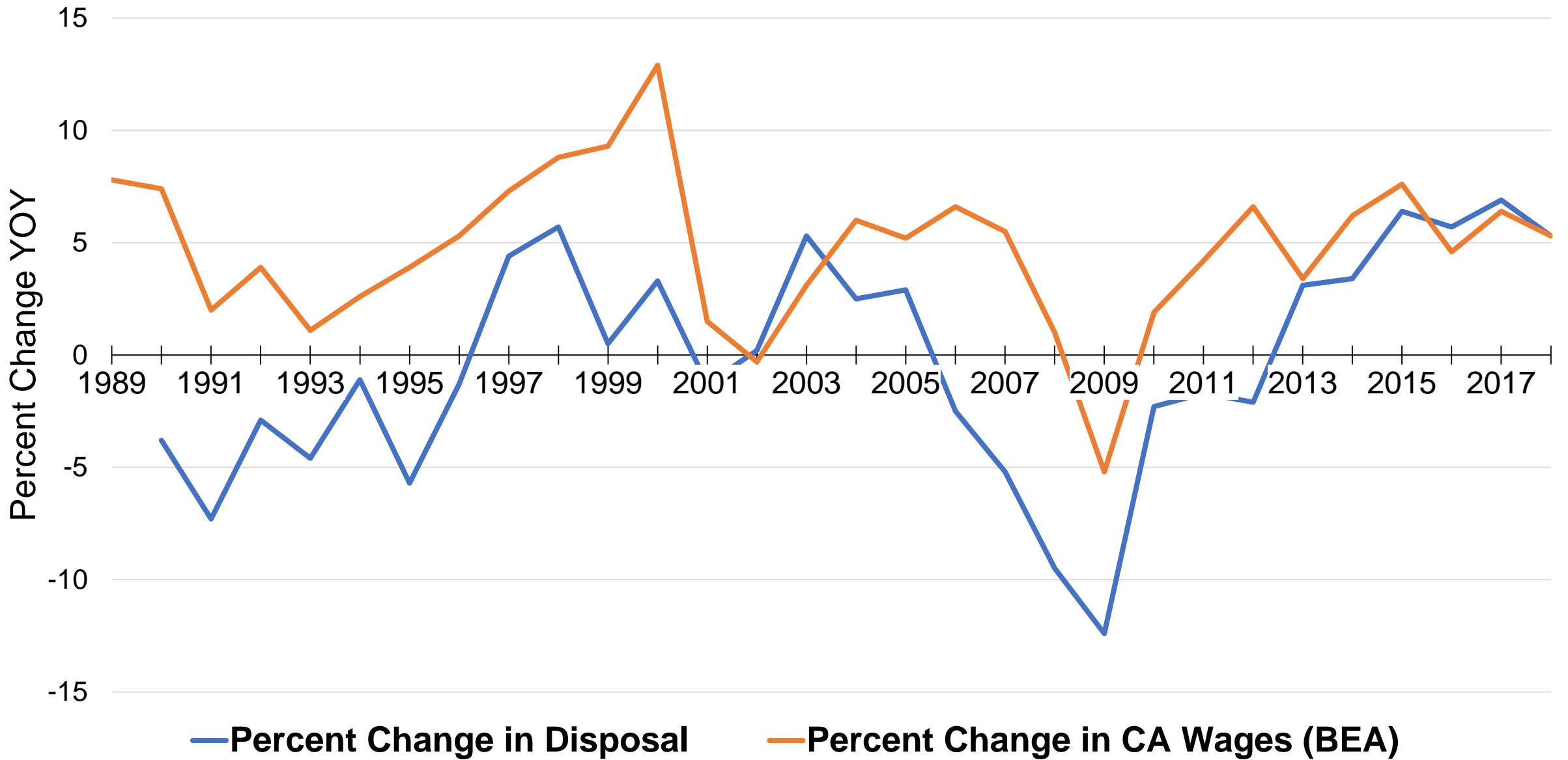
COVID Impacts

COVID-19 and Impacts on Recycling Markets

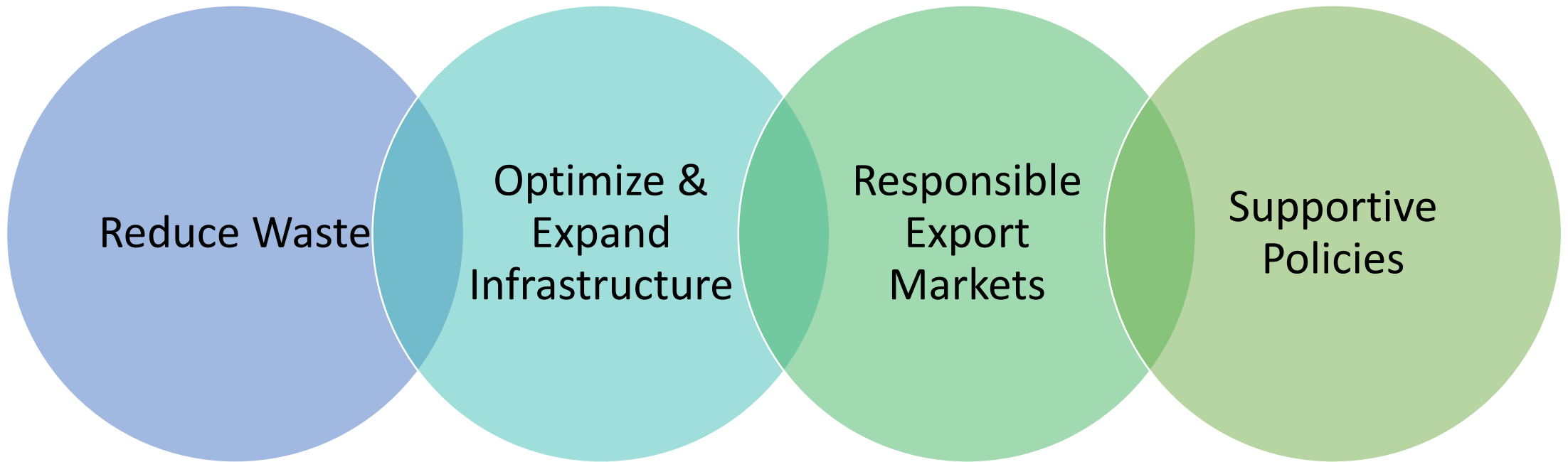


Beverage Container Recycling Program

- Looking at Sales & Returns comparing 1/2019-8/2019 compared to 1/2020-8/2020
 - 8% increase in sales
 - 5% decrease in returns
 - Overall recycling rate went from 76% to roughly 67% for that 8 month period
- Passage of AB 793 (Ting) - Sets 50% recycled content mandate on all plastic beverage containers by 2030



Reducing Waste and Keeping Materials in California



What's Ahead

Understanding
Material Flow

Organics
Diversion

Defining
Recyclable

Packaging
Reform?



Thank you!
zoe.heller@calrecycle.ca.gov